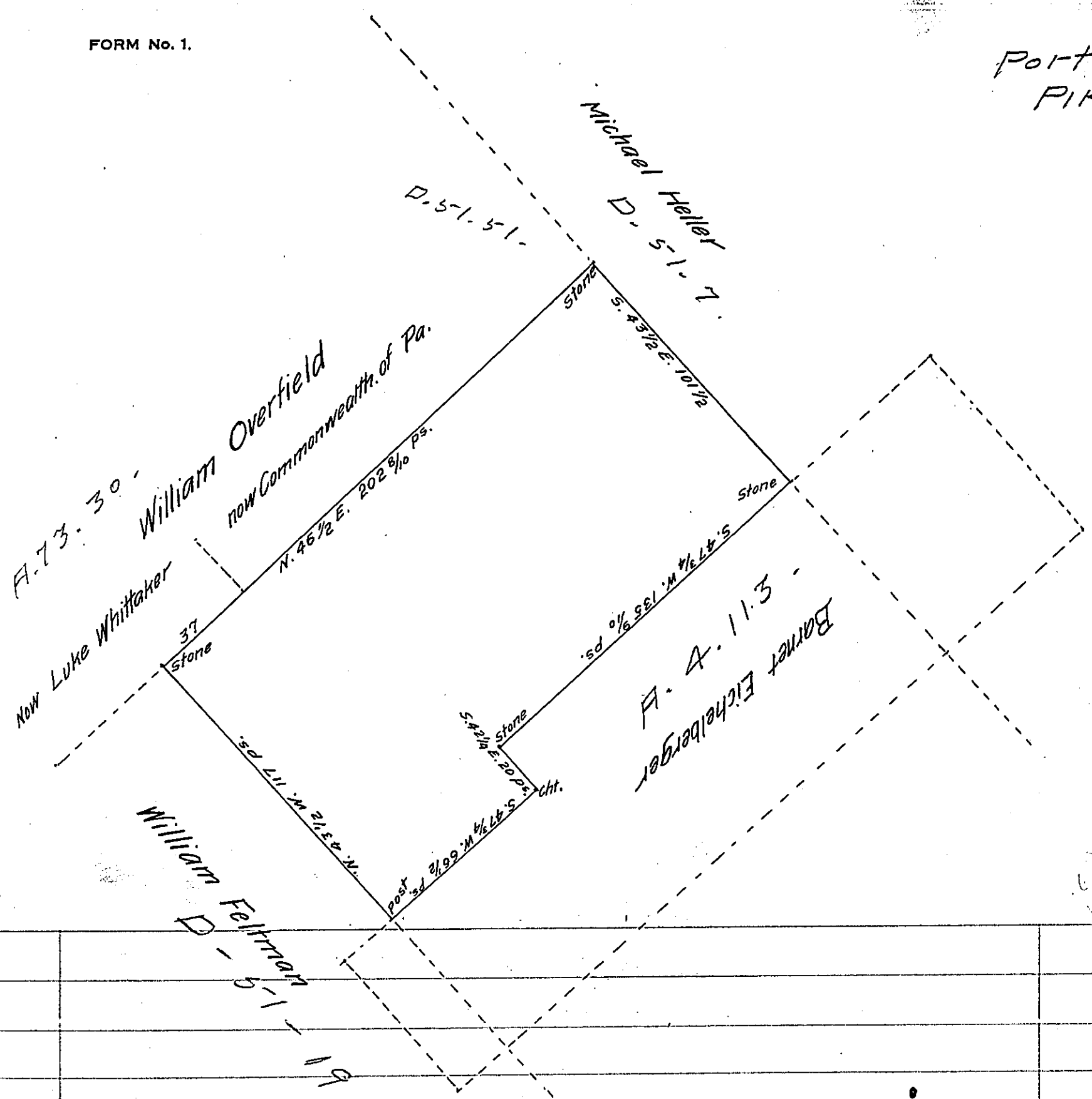


Porter - PIKE



A Draft of a tract of land situated in the Township of Porter and County of Pike, containing one hundred twenty-six acres 86 1/2 perches and allowance of six per cent. for roads, etc. Surveyed the Fifth day of July 1910 in pursuance of a warrant granted to Charles Grear and Henry Shell dated the 23<sup>rd</sup> day of August 1866.

To Hon. Henry Houck } H. E. Frankenfield  
 Secretary of Internal Affairs } Surveyor

Examined and approved Frank Schorr  
 County Surveyor.

IN TESTIMONY that the above is a copy of the original remaining on file in the Department of Internal Affairs of Pennsylvania, made conformably to an Act of Assembly approved the 16th day of February, 1833, I have hereunto set my Hand and caused the Seal of said Department to be affixed at Harrisburg, this first day of March 1911.

*Henry Houck*  
 Secretary of Internal Affairs.